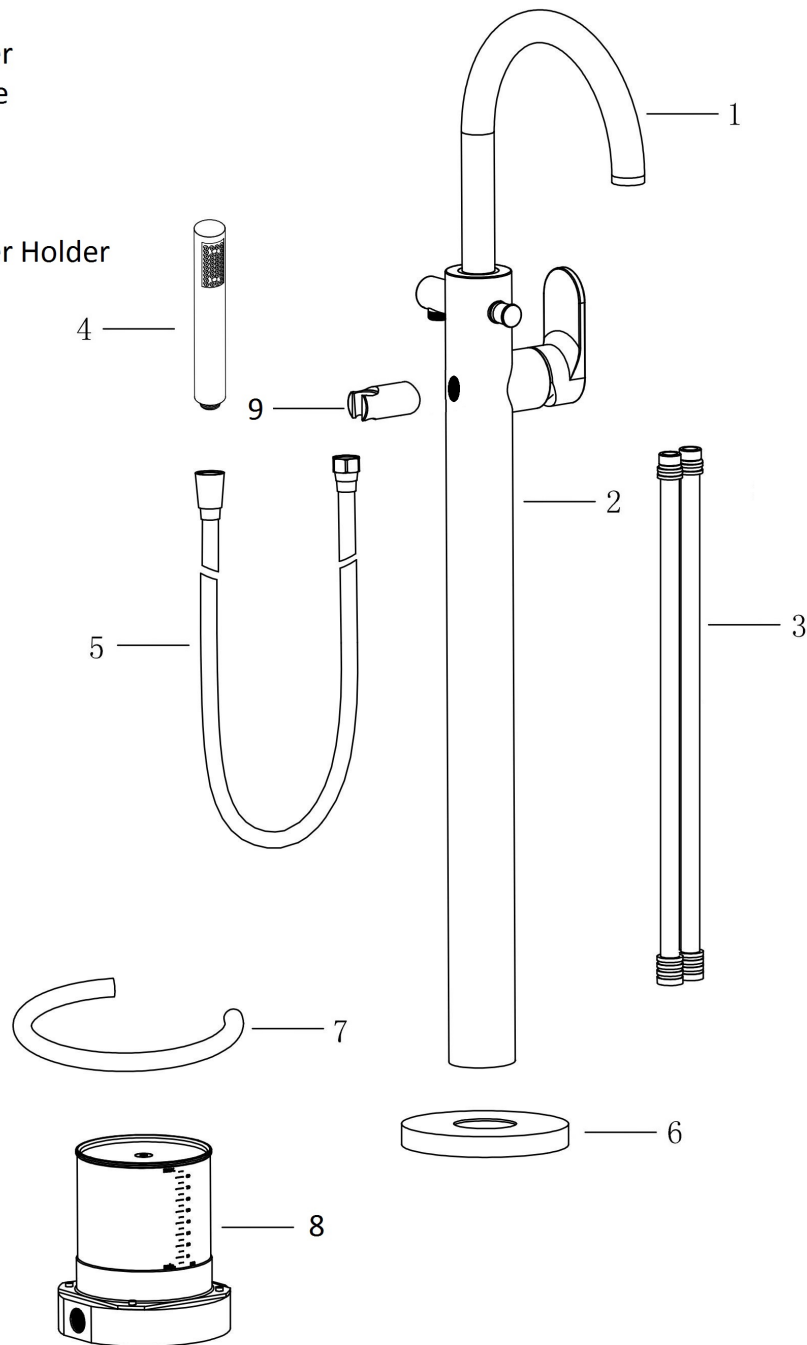


Please read the instructions completely before beginning the installation.

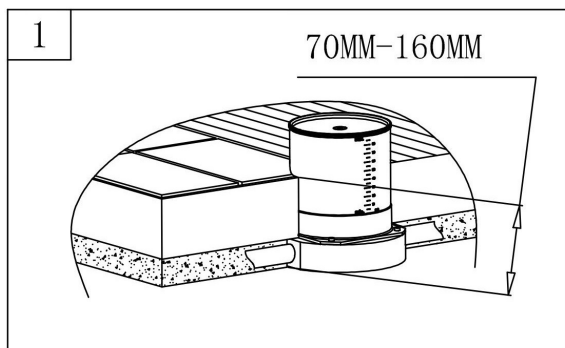
1. Spout
2. Body
3. Supply Hose
4. Hand Shower
5. Shower Hose
6. Flange
7. Drain-Pipe
8. Rough Body
9. Hand Shower Holder



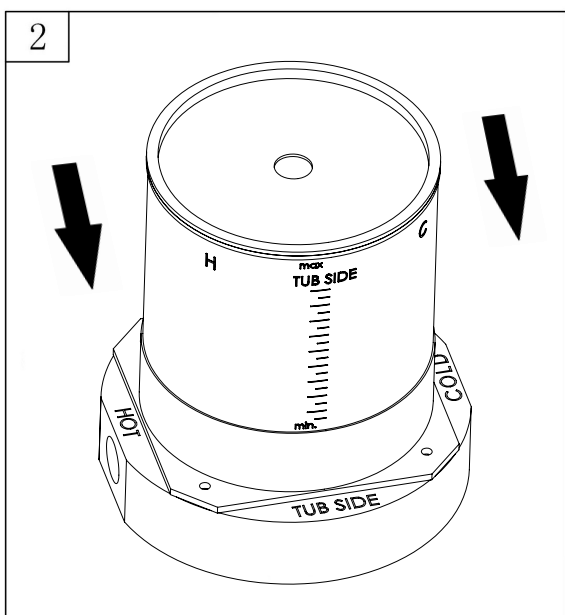
The measurements shown are for reference only. Products and specifications shown are subject to change without notice.

www.santecfaucet.com | P: 310.542.0063 F: 310.542.5681

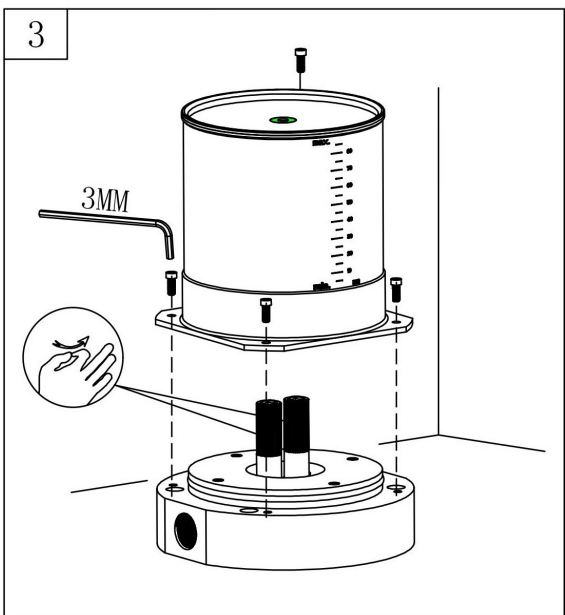
ROUGH INSTALLATION INSTRUCTION



-The depth, measured from the floor, should be between 70mm-160mm (2.75"-6.30").



-Orient the Rough Body so that "TUB SIDE" on the mudguard and rough is facing the tub.

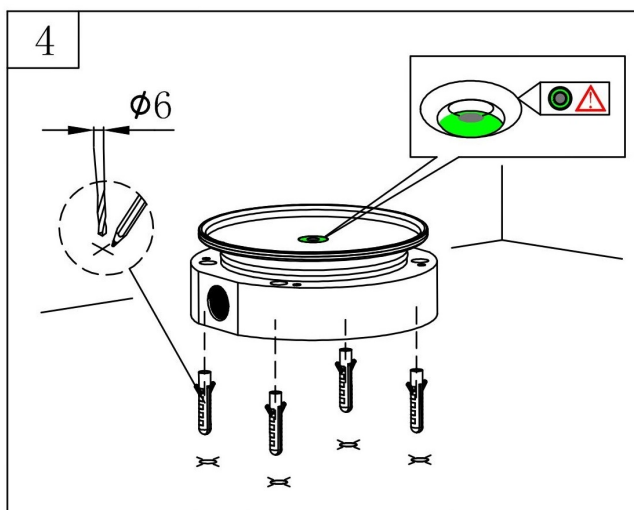


-Take off the mud guard by removing the four screws. Rotate counter-clockwise to remove the two stop plugs.

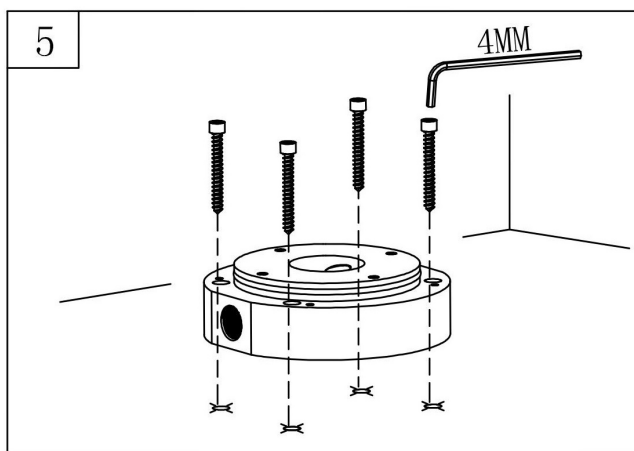
The measurements shown are for reference only. Products and specifications shown are subject to change without notice.

www.santecfaucet.com | P: 310.542.0063 F: 310.542.5681

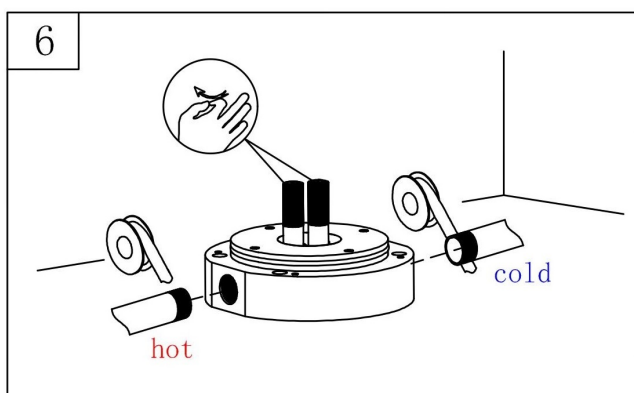
ROUGH INSTALLATION INSTRUCTION



-Measure and mark the distance of the Rough Body holes. Then drill the holes. Use the leveler on the mud guard cover to ensure the Rough Body is evenly leveled.

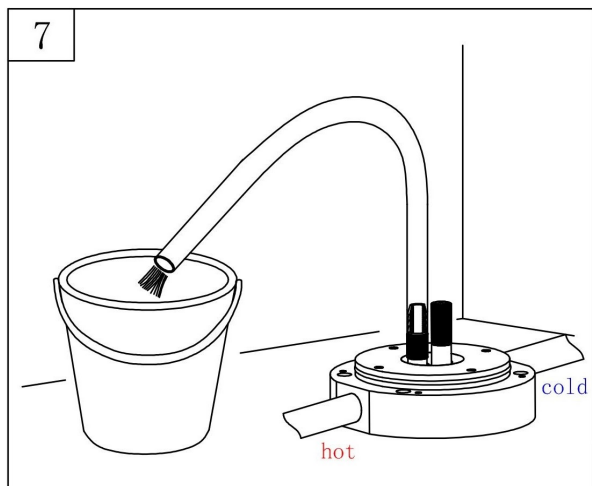


-Fix the Rough Body with 4mm Allen screws and tighten with its respective Allen wrench to the ground.

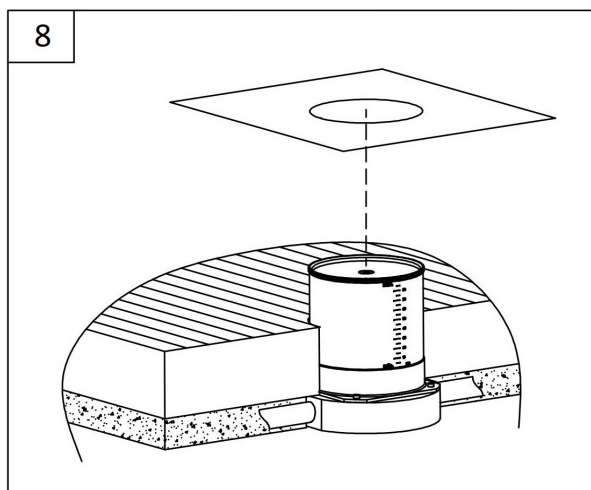


-Wrap the threaded section of the hot & cold supply hose with Teflon tape (not included). The hose's pipe size must be $\frac{1}{2}$ " male NPT. Connect the hot & cold supply hose to the Rough Body by screwing them in to the inlet. Install the stop plugs and test for leakage to ensure proper connection.

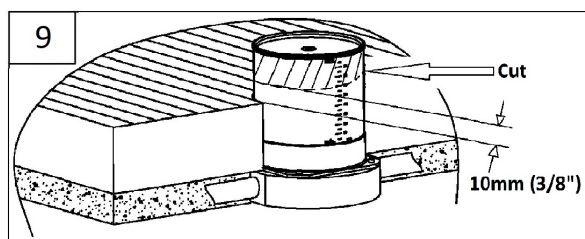
ROUGH INSTALLATION INSTRUCTION



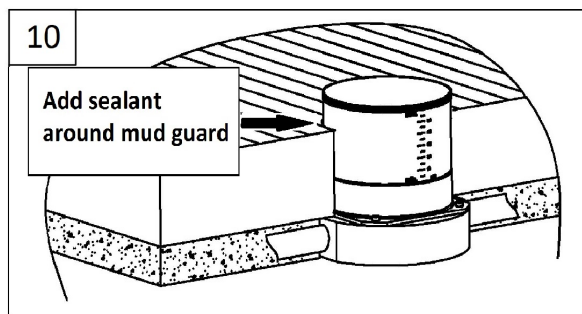
-Install the flush plug and insert it into the Drain-Pipe. Keep a stop plug on the opposite outlet of the rough. Put the open end of the Drain-Pipe into a bucket. Turn on the water supply to flush. Repeat on the opposite side.



-Install the two stop plugs back and install the mud guard. Ensure mud guard's "TUB SIDE" is facing the tub. Then place the floor tiles.



-Cut the mud guard so that it extends 10mm (3/8") above the surface of the finished floor.

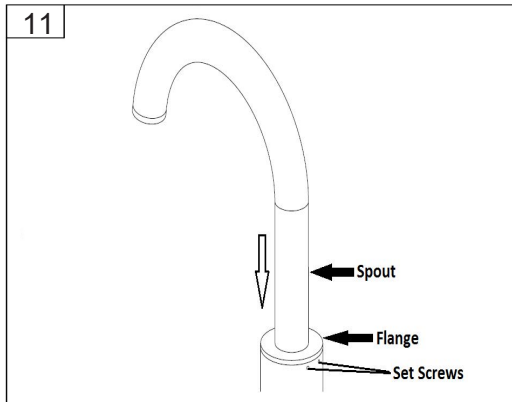


-Use silicon caulk to glue and seal around the mud guard to hold the Rough Body in place.

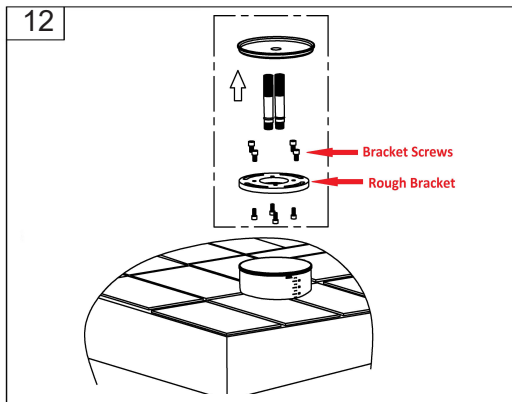
The measurements shown are for reference only. Products and specifications shown are subject to change without notice.

www.santecfaucet.com | P: 310.542.0063 F: 310.542.5681

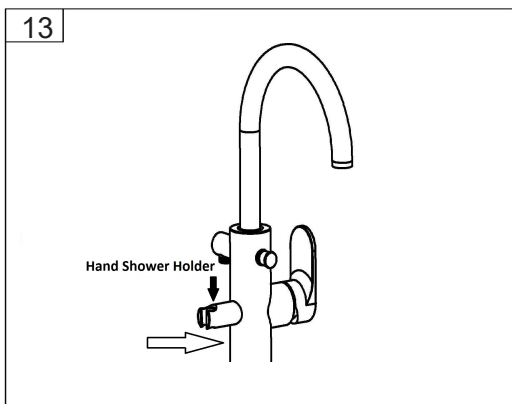
TRIM INSTALLATION INSTRUCTION



-The spout will be included separately. To install the spout, insert the flange into the top of the tub filler with the front spout facing in the same direction as the diverter knob. Secure the spout with two set screws that is already installed in the two screw holes.

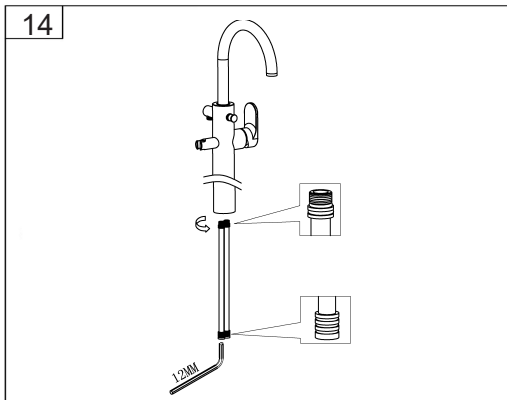


-Turn off the water supply. Remove the mud guard cover. Rotate counter-clockwise to remove the two stop plugs. Remove Bracket Screws that hold the Rough Bracket. Take the Rough Bracket out.

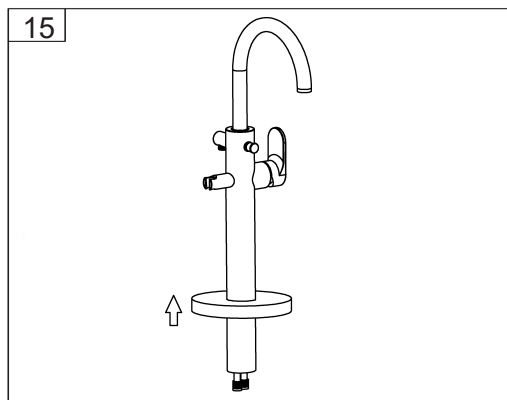


-Install the hand shower holder with the included screw.

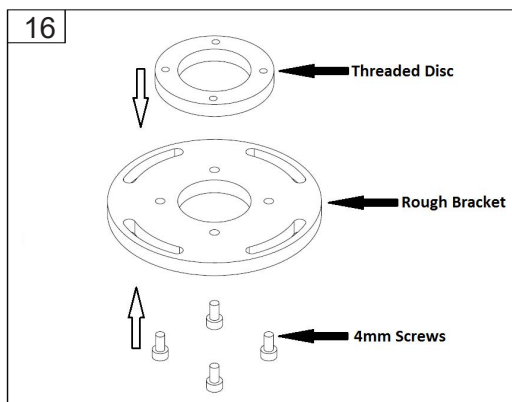
TRIM INSTALLATION INSTRUCTION



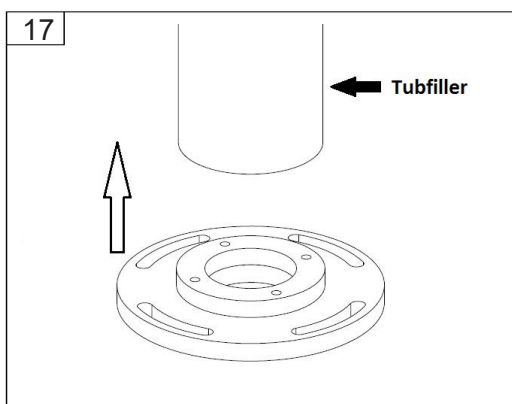
-Screw the supply tubes with a 12mm Allen wrench. The threaded portion of the tube should be inserted first into the tub filler. The supply tubes are color coded red and blue for HOT and COLD respectfully. Make sure that they are connected to their respective color coded inlet.



-Insert the flange onto the tub filler.



-Attach the small, Threaded Disc to the Rough Bracket with screws using 4mm Allen wrench.

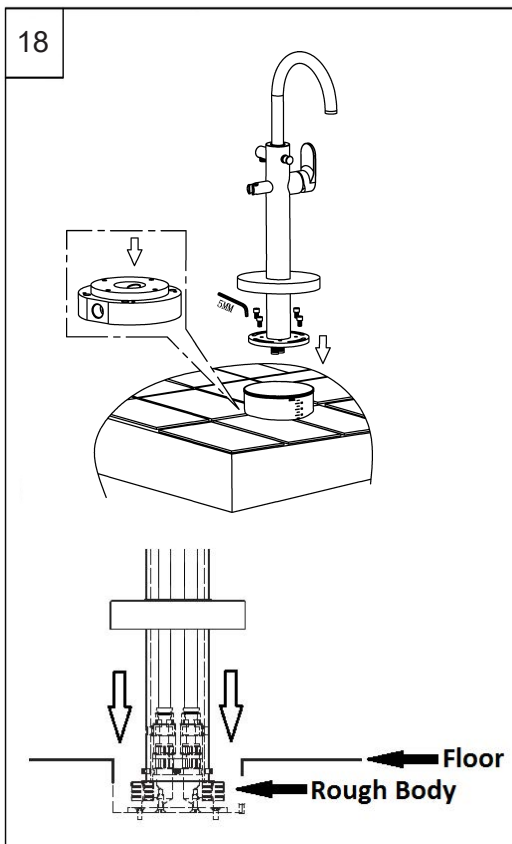


-Screw the Rough Bracket onto the bottom of the tub filler.

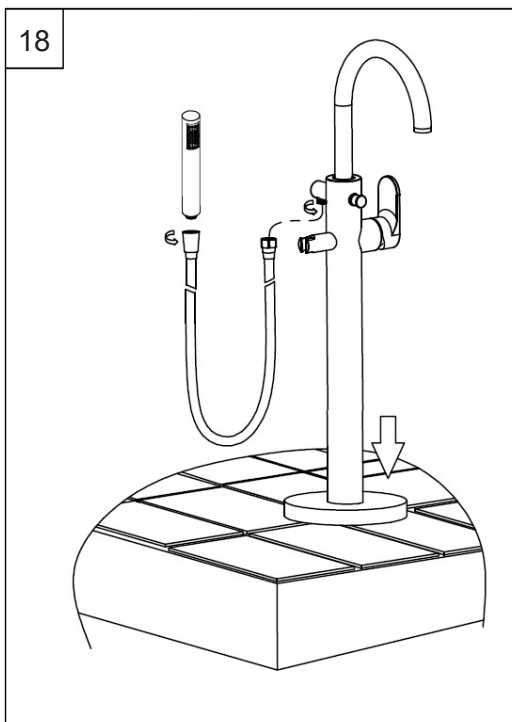
The measurements shown are for reference only. Products and specifications shown are subject to change without notice.

www.santecfaucet.com | P: 310.542.0063 F: 310.542.5681

TRIM INSTALLATION INSTRUCTION



-Install the tub filler into the Rough Body by aligning HOT (red) and COLD (blue) supply tubes into matching color outlets in Rough Body. Press down firmly to ensure seal. Ensure the spout is facing the tub. Use the screws to mount the rough bracket with a 5mm Allen wrench.



-Push the flange down to the floor. Install the six-sided part of the shower hose to the hose outlet of the tub filler. Install the hand shower to complete installation.



FINISH CARE INFORMATION

WARNING: Do not clean your SANTEC product with ammonia (Window cleaner), bleach, soap, acids, abrasives, harsh polish, harsh cleaners, a coarse surfaced cloth, coarse sponge, or any type of scouring pad. Doing so may ruin your faucet finish and/or void the warranty.

Thank you for making SANTEC a part of your lifestyle and luxury spa experience. Our products have been created as works of enduring quality and sophisticated design.

Luxurious finishes need proper care and attention, so in order to understand how to properly clean your distinctive luxury finish, please refer to the finish care information below:

Your SANTEC product can be identified in one of two categories: clear coated finishes or non-clear coated finishes. Clear coated finishes are more scratch-sensitive and are more reactant to harsh cleaning chemicals than non-clear coated finishes. Once you have identified the specific luxury finish of your SANTEC product, please follow the important corresponding care instructions.

CLEAR COATED FINISHES

We recommend that all faucets, drains, etc., be gently wiped dry with a soft cloth after use to avoid water spotting and water deposit build-up. A mild liquid hand soap may be used occasionally if desired. Use of a non-abrasive carnauba wax will add protection to the finish and should be used if the faucets will not be dried after use. For clear coated finishes, it is recommended to clean your product weekly with a soft moist cloth.

NON-CLEAR COATED FINISHES

We recommend that all faucets, drains, etc., be gently wiped dry with a soft cloth after use to avoid water spotting and water deposit build-up. A mild liquid hand soap may be used occasionally if desired. Use of a non-abrasive carnauba wax is occasionally required and will add protection to the finish if the faucets will not be dried after use.

TO OBTAIN WARRANTY SERVICE

Please read 'WHAT IS COVERED BY OUR WARRANTY' and 'EXCLUSIONS AND LIMITATIONS OF WARRANTY' sections to understand what is and what is not covered. Please have ready the proof of purchase (original sales receipt), description of the problem, and carefully package the product or defective part with postage prepaid. Then, please contact your local SANTEC Showroom or write to SANTEC Technical Services.



LIFETIME LIMITED WARRANTY

SANTEC is committed to enhancing your bathroom experience by creating luxury products that will provide enduring satisfaction. Every effort has been made to satisfy the highest standards of design and production, to create lasting peace of mind for our customers. We provide the following limited warranties on our products:

LENGTH OF WARRANTY & WHO IS COVERED BY OUR WARRANTY

This warranty extends to the original consumer purchaser only and extends for as long as the original purchaser owns the product and the home in which the product is installed.

WHAT IS COVERED BY OUR WARRANTY

1. **FINISHES:** SANTEC Polished Chrome, Polished Nickel and Satin Nickel finishes carry a Lifetime Limited warranty against manufacturing defects and tarnish to the original purchaser. All other finishes carry a ten (10) year limited warranty against manufacturing defects and tarnish to the original purchaser only.
2. **CARTRIDGES:** Santec cartridges carry a lifetime limited warranty, with the exception of thermostatic and pressure balanced cartridges, which carry a three (3) year limited warranty against manufacturing defects to the original purchaser.
3. **PARTS:** Santec parts carry a 10-year limited warranty against manufacturing defects, to the original purchaser.

EXCLUSIONS & LIMITATIONS OF WARRANTY

This warranty does not cover:

1. Damage due to negligence, accident, abuse, improper installation, or improper maintenance such as, but not limited to: heat from soldering during installation, the use of plumber's putty, damage from tools used during installation, the use or exposure to chemicals or cleaning products either abrasive or non-abrasive, or the use of any cleaning tool or product other than a soft, clean cloth. Reverse osmosis may also shorten the life of the finish.
2. Changes in the finish or in the product due to normal wear or aging does not cover any products or parts which have been altered or used in a manner not typical for the product.
3. Loss, damages, or expense, incidental or consequential whatsoever, originating from the purchase, installation, use, repair, failure, or replacement of any SANTEC product or part, allowed by law.
4. Commercial and/or Industrial installations and use of the product.
5. This warranty does not include labor, travel charges, or any costs incurred for repair, removal, installation, servicing, diagnosing, or handling of either defective or replacement parts.
5. Damage or deterioration caused by environmental impacts.

SANTEC reserves the product components of the covered product will be repaired, refinished, or replaced at the sole discretion of SANTEC. SANTEC reserves the right to examine any product claimed defective prior to any warranty claim being accepted or processed, at its sole discretion. This warranty gives you specific legal rights and you may have other rights which may vary from state to state.