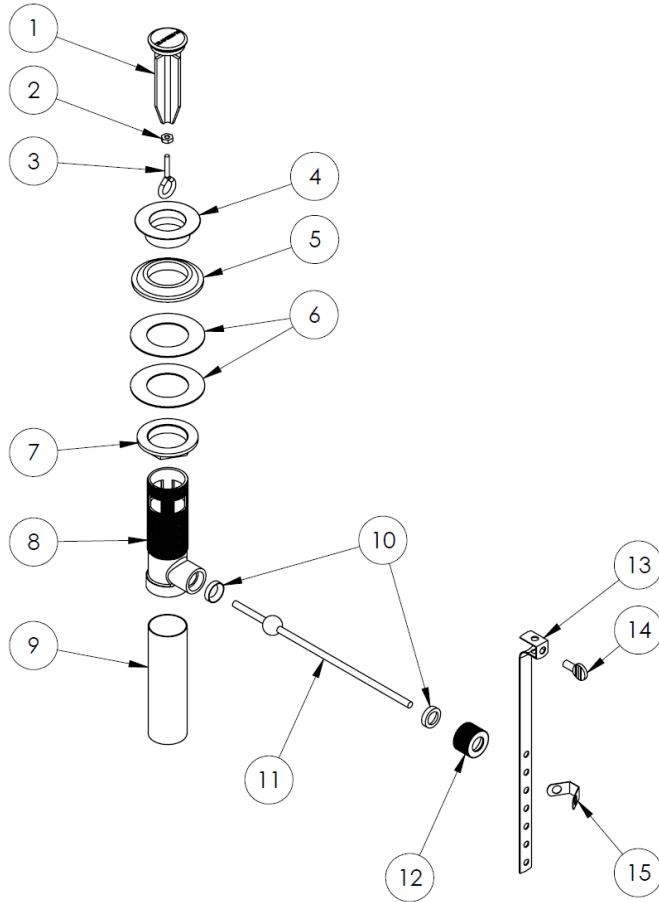
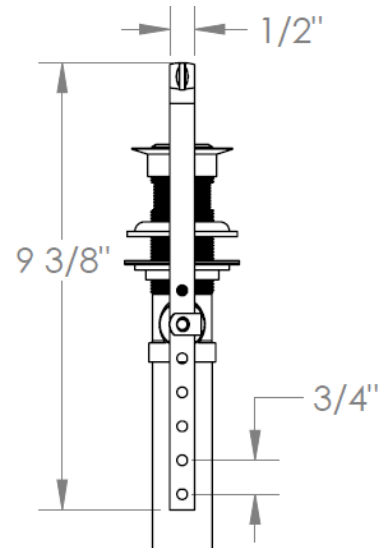
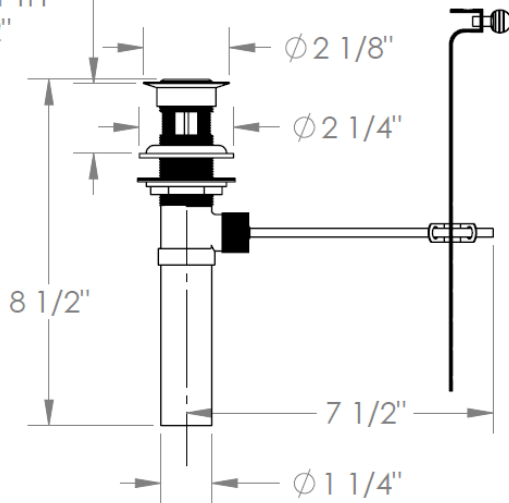


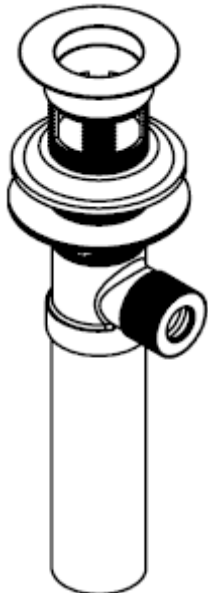

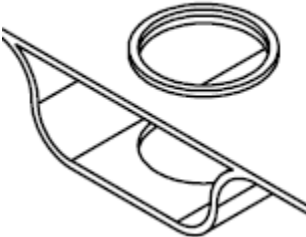
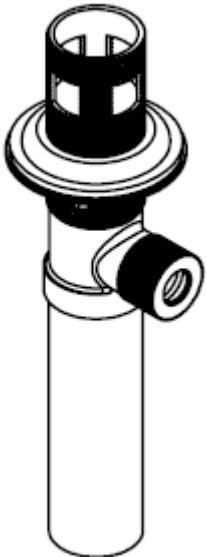
## Parts Breakdown and Dimensions

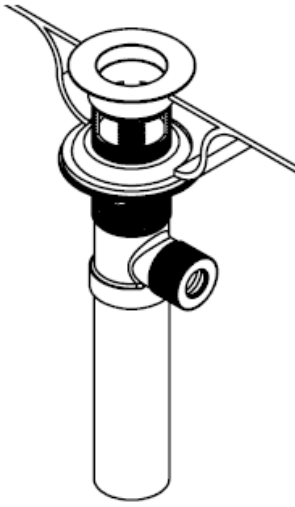
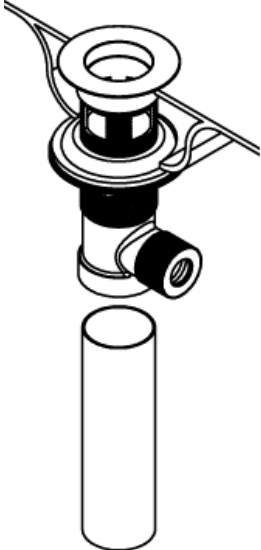
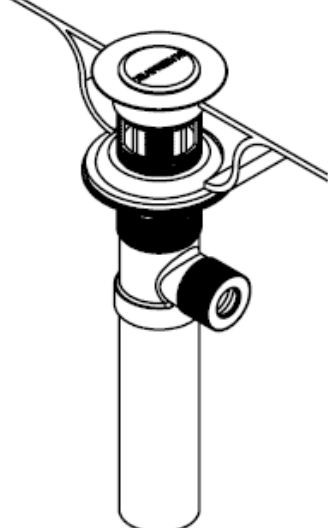
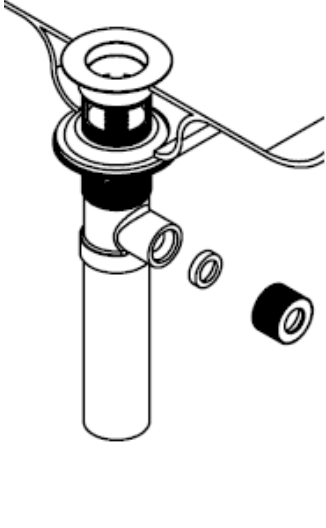


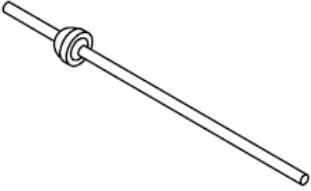
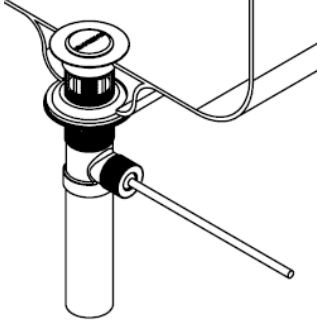
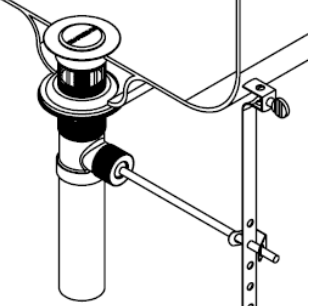
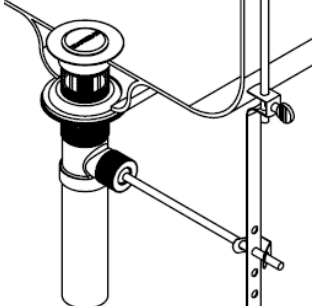
ITEM NO.	DESCRIPTION	QTY.
1	Plug	1
2	Eyehook Nut	1
3	Eyehook	1
4	Collar	1
5	Gasket	1
6	Body Washer	2
7	Locknut	1
8	Body	1
9	Tail	1
10	Pivot Washer	2
11	Pivot Arm	1
12	Pivot Nut	1
13	Strap	1
14	Wingnut	1
15	Pivot Clip	1

MAX DEPTH  
2 1/8"  
MIN DEPTH  
1 1/2"



<u>STEPS</u>			
<p>1. Remove the plug from the body.</p>	 A technical drawing of the MPU7 Pop-Up Lavatory Drain with Overflow. The drain body is shown with a black plug inserted into the top opening. The plug is being lifted out of the body.	<p>2. Unscrew the collar.</p>	 A technical drawing of the MPU7 Pop-Up Lavatory Drain with Overflow. The drain body is shown with the black plug removed. A black collar is being unscrewed from the top of the drain body.
<p>3. Apply silicon around the top of the drain hole.</p>	 A technical drawing showing a cross-section of the drain body with a silicon sealant being applied around the top edge of the drain hole. A separate ring-shaped gasket is shown above the sealant.	<p>4. Push the gasket down to the body washer.</p>	 A technical drawing of the MPU7 Pop-Up Lavatory Drain with Overflow. The drain body is shown with the black collar removed. The ring-shaped gasket is being pushed down to the body washer.

<p>5. Put the body into the drain hole through the bottom of the sink and screw the collar back onto the body. Make sure to push the collar onto the silicon. Tighten the locknut such that it pushes the gasket up to the bottom of the sink. Do not overtighten the nut.</p>		<p>6. Unscrew the tail from the body and apply Teflon tape to the threads of the tail. Thread the tail back onto the body.</p>	
<p>7. Feed the plug into the body and align it with the logo as desired. Remove the plug and loosen the eyehook and adjust the length so that it will accept the pivot arm. Carefully tighten the eyehook nut such that the eyehook keeps its orientation.</p>		<p>8. Remove the pivot nut to access the pivot washer, then remove the pivot washer from the pivot nut.</p>	

<p>9. Remove the pivot clip from the pivot arm, then feed the outer pivot washer onto the pivot arm up to the pivot ball.</p>		<p>10. Insert the short end of the pivot arm into the body and make sure the arm goes through the hook in the eyehook. Secure the pivot nut onto the body. Make sure not to overtighten to prevent damage to the pivot washers.</p>	
<p>11. Put one end of the clip onto the pivot arm. Slide the strap onto the pivot arm at the desired height so it can attach to the lift rod. Secure the other end of the pivot clip onto the pivot arm.</p>		<p>12. Insert lift rod into the top of the strap and tighten the wingnut.</p>	
<p>13. Connect the drain to the trap and check for leaks.</p>			

### **IMPORTANT INSTALLATION INFORMATION**

- USE TEFLON TAPE OR PIPE SEALANT FOR THREADED CONNECTIONS
- DO NOT USE PLUMBER'S PUTTY ON ANY OF THE BRASS COMPONENTS  
This will cause the finish to tarnish. A non-corrosive Alkoxy Silicone is recommended.
- DRAINS ARE ONLY UNDER WARRANTY FOR MECHANICAL FAILURE, NOT FOR FINISH DEFECTS

**For technical support, please call 718-257-2800**